

Milesight_Release_Note_For_Camera_XX.7.0.79

Firmware Version: XX.7.0.79

Applicable Model: MS-CXXXX-B/C/A

Release Date: 28th September, 2021

1. Overview

Milesight, a leading designer and manufacturer of IP communication products and IP video surveillance products, is pleased to announce the release of the new firmware version (XX.7.0.79) of Milesight Network Camera. This updated release includes the new features, optimizations and bug fixes.

2. Firmware link

Firmware	Download Link
31.7.0.79	https://drive.google.com/file/d/1acu1EZ_RTnH6lMrG456e_WMGoahvwlgO/view?usp=sharing
31.7.0.79-LPR1	https://drive.google.com/file/d/1D6n47AJHiGQ5ouLVxj3OUPbgBI17Uh8y/view?usp=sharing
31.7.0.79-LPR2	https://drive.google.com/file/d/1V-qI8l_UK-7DBBFhIKxZHUzKfnIT5Q82/view?usp=sharing
32.7.0.79	https://drive.google.com/file/d/1gEh86QM8LzliYIO0idoswP6CrOhyRTKn/view?usp=sharing
33.7.0.79	https://drive.google.com/file/d/1ASfUrDsAIS19hWsobF1P8Kt5WdRzJJDp/view?usp=sharing
40.7.0.79	https://drive.google.com/file/d/1XZaJgG4zA0ZvkkregIIUFIJTndsmLDtD/view?usp=sharing
43.7.0.79	https://drive.google.com/file/d/1on_P2OYqFvsBVUQHxW0y58NEEML7CEb8/view?usp=sharing
43.7.0.79-LPR1	https://drive.google.com/file/d/15DbZWnH-m3y8ldSe0nwCok8KkNaipns6/view?usp=sharing
43.7.0.79-LPR2	https://drive.google.com/file/d/1cPhdYkJPufKqQ0Ndck53w-ibnmphQRwS/view?usp=sharing
43.7.0.79-LPR3	https://drive.google.com/file/d/1OT0g9sNVmLTlsAOfH6_Dzax4JzalwpDN/view?usp=sharing
45.7.0.79	https://drive.google.com/file/d/1tLRXeUs9uEELiAKtG4V-WTtmTFumLPE0/view?usp=sharing
45.7.0.79-LPR1	https://drive.google.com/file/d/1m107uTYlgoT4FkBd9C2xvxJXk6enugU/view?usp=sharing
45.7.0.79-LPR2	https://drive.google.com/file/d/19BSm7B1VMPPFq6QTwqD65Ticj4lkuHd5/view?usp=sharing
45.7.0.79-LPR3	https://drive.google.com/file/d/1pyk7LftiQnQK23PgSXsP4enWHiqnCm_m/view?usp=sharing

46.7.0.79

https://drive.google.com/file/d/1UZCnU-IOzurj_1DKh9d38MR97Ae2alv_/view?usp=sharing**Note:**

If you failed to get the upgrade firmware through clicking the link directly, please copy the link to browser manually.

3.What's new

3.1 New Features

(1) Add Face Privacy Mode:

Support Face Privacy function. When Face Privacy Mode is enabled, the detected faces in the face detection area will be mosaic automatically. The size of the mosaic is related to that of the detected faces, and users can customize the size of the detected faces as needed. The Face Privacy function meets the needs of users in some special scenarios, which greatly protects people's portrait rights.

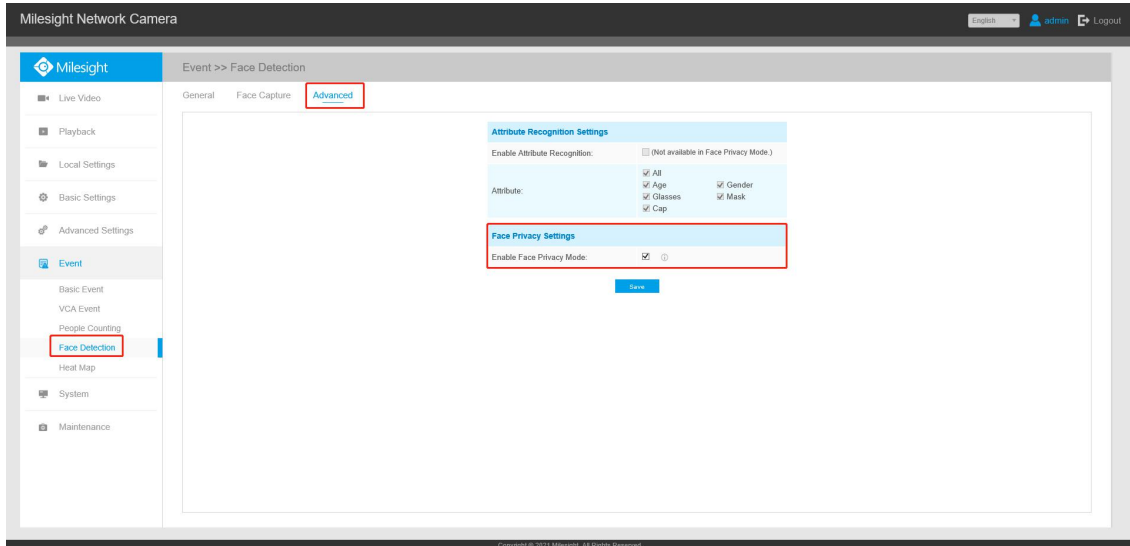


Figure 1 Face Detection-Advanced page

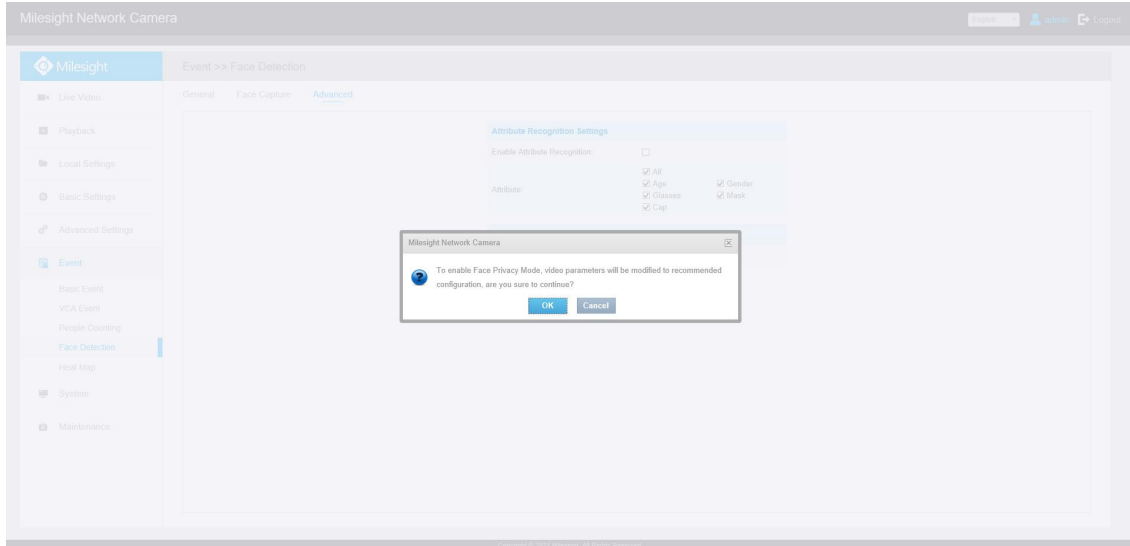


Figure 2 Configuration Instruction of Face Privacy Mode

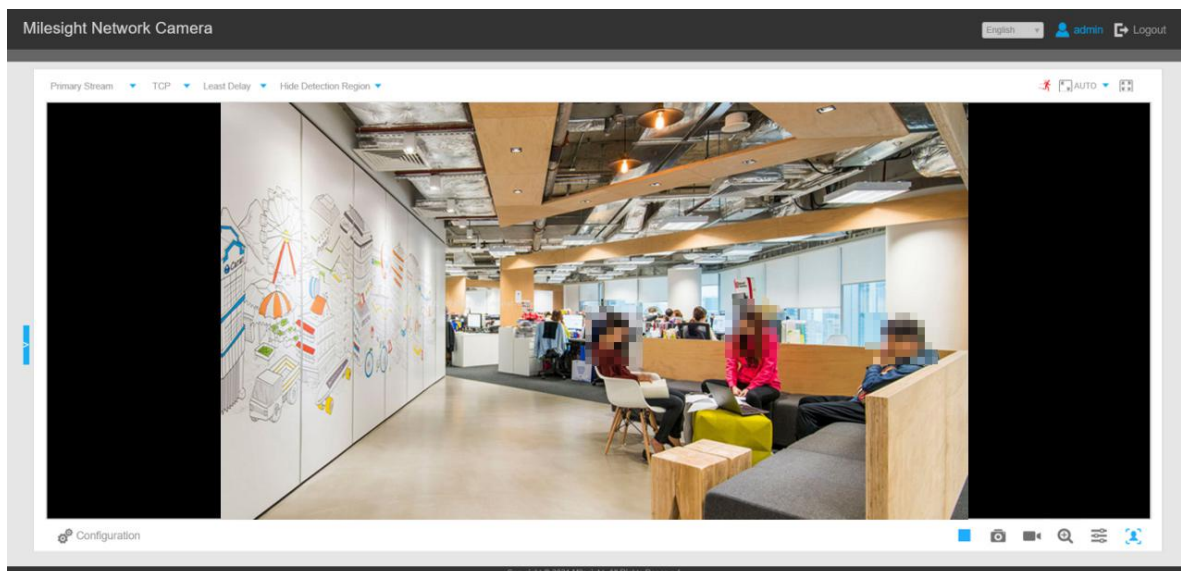


Figure 3 Face Privacy Mode on Live View interface

Note:

- Please make sure the face detection function is enabled.
- Make sure your camera model is MS-CXXX-XXC. (Except for LPR Camera Series)

(2) Add Face Attribute Recognition function:

Support Face Attribute Recognition function. When Attribute Recognition is enabled, the attributes of detected faces will be displayed on the left side of the Live View interface. The attributes include Age, Gender, Glasses, Mask and Cap. Users can choose the attributes as needed. Attribute Recognition meets the needs of users in some special scenarios, which improves user experience.

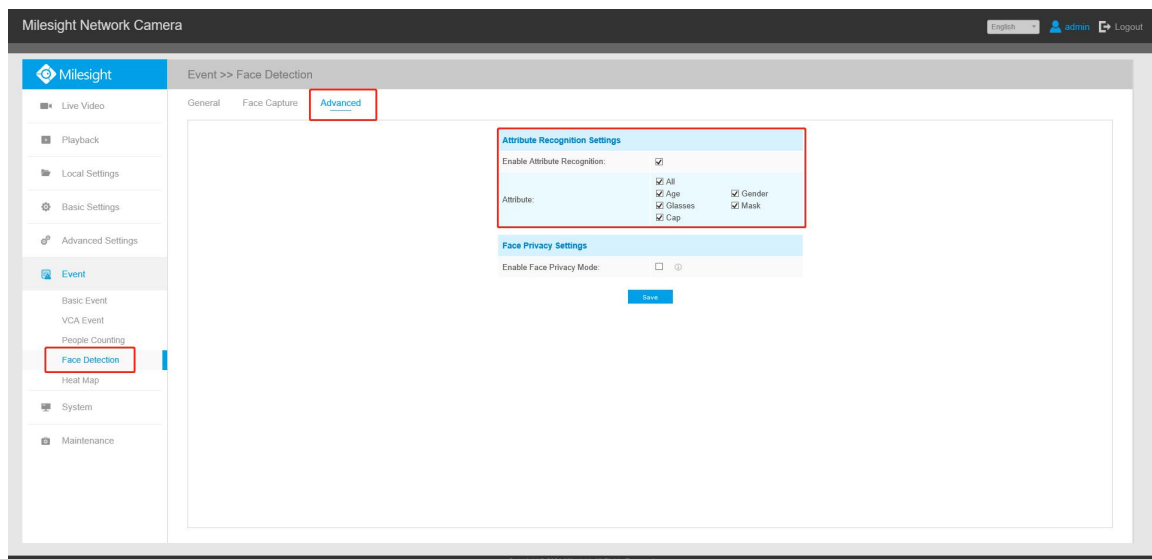


Figure 4 Face Detection-Advanced page

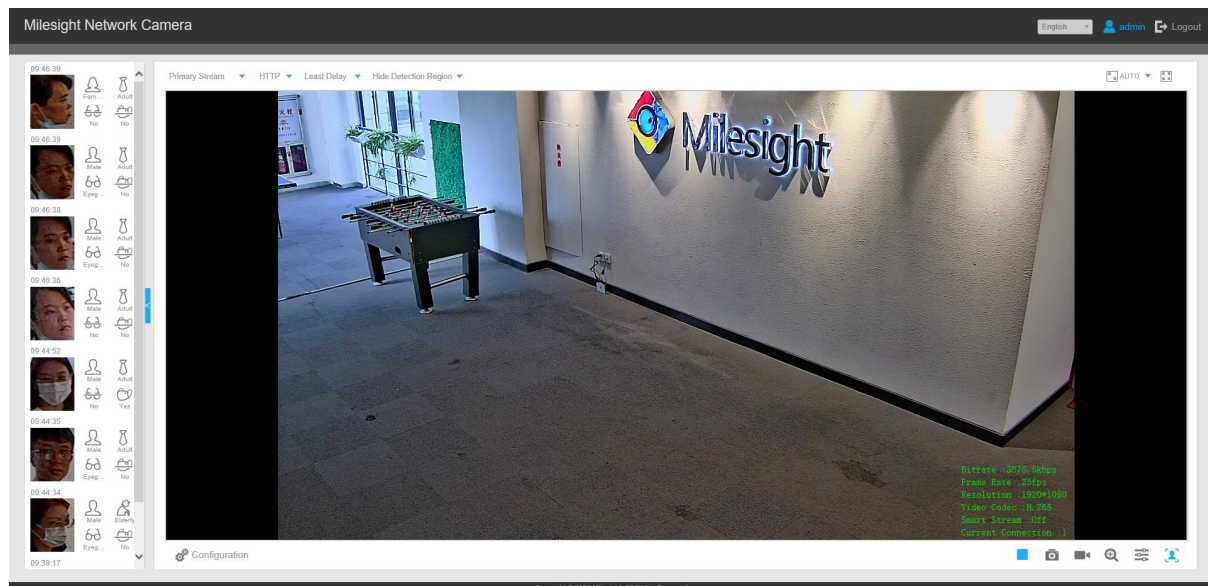


Figure 5 Attribute Recognition on Live View interface

Note:

- Please make sure the face detection function is enabled.
- Make sure the Capture Mode Option is set to Quality Priority.
- Attribute Recognition function cannot be used together with Face Privacy function.
- Make sure your camera model is MS-CXXX-XXC. (Except for LPR Camera Series)

(3) Add mosaic type to the Privacy Mask function:

Support Privacy Mask with mosaic. The increase of mosaic type can maintain the continuity of the picture and improve the visual effect.

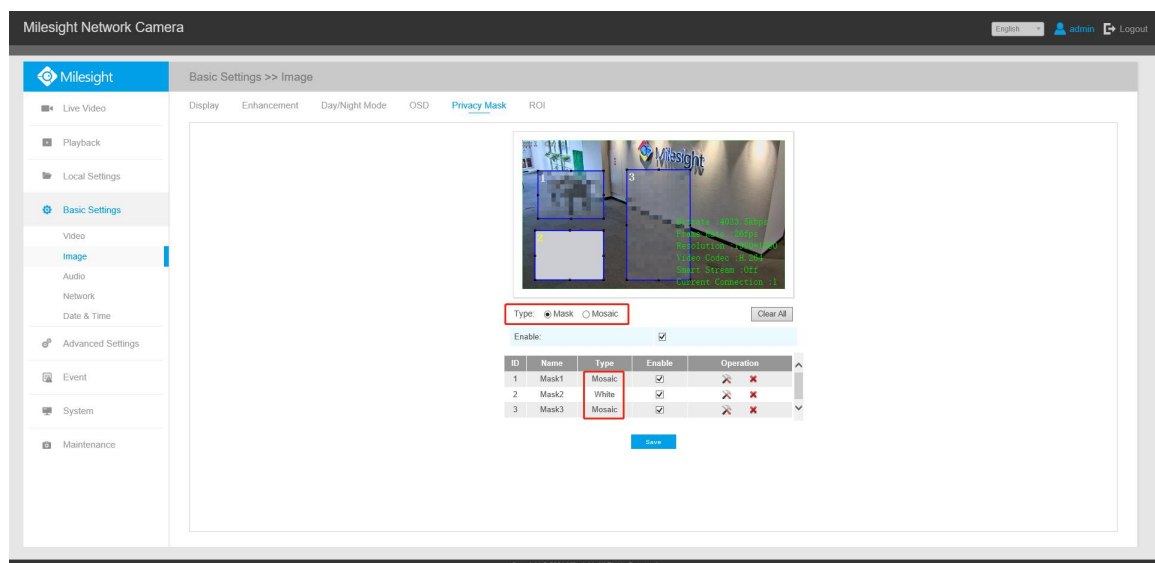


Figure 6 Image-Privacy Mask page

Note:

- Support up to 4 mosaic areas.
- Make sure your camera model is MS-CXXXX-XXC.

(4) Add Advanced Mode to Motion Detection:

Support Advanced Mode in Motion Detection. When Advanced Mode is selected as shown in the figure below, users can configure up to 4 detection regions and Sensitivity for each detection region, which greatly enhances user experience.

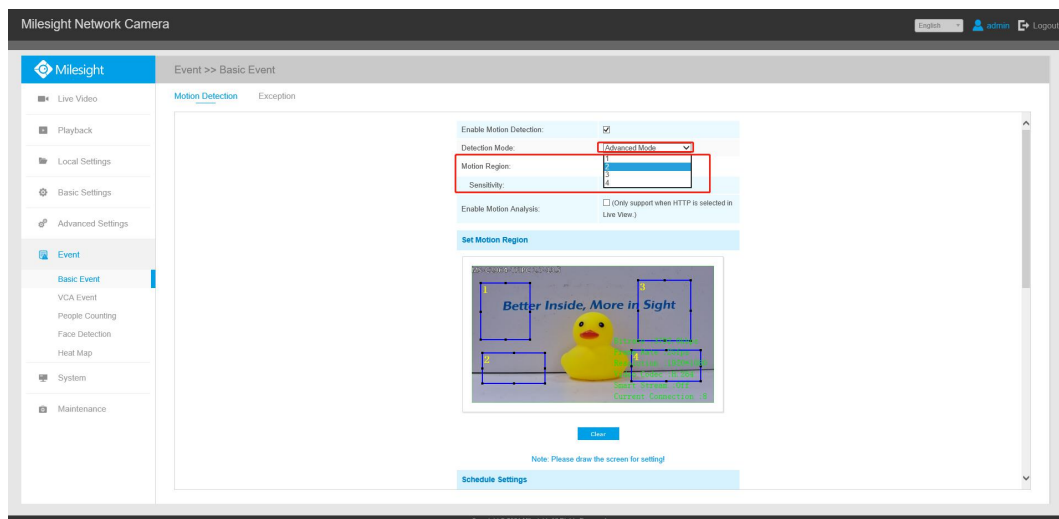


Figure 7 Motion Detection page

(5) Add Motion Analysis function to motion detection:

Support Motion Analysis function in Motion Detection. When Motion Analysis is enabled, the moving region will turn yellow so that the user can know exactly where the motion occurred, which greatly improve user's efficiency.

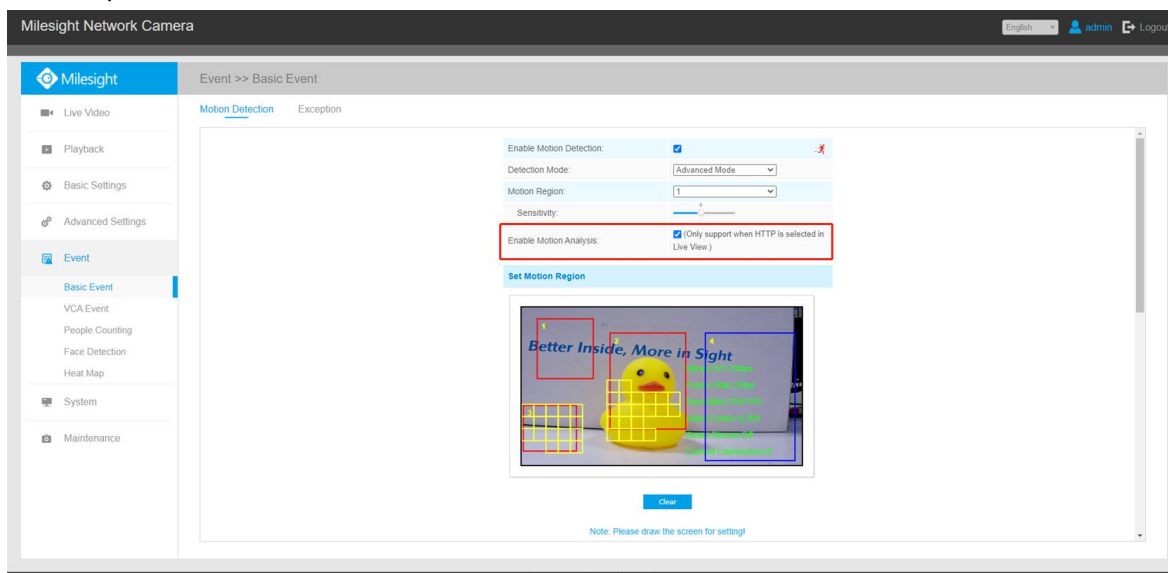


Figure 8 Motion Detection page

Note:

- Motion Analysis is supported only when HTTP is selected in Live View.

(6) Compatible with MS-CXXXX-PA model.

3.2 Optimizations

- (1) Added HTTP Notification Function to the Alarm Action of Record Failed, SD Card Full, SD Card Uninitialized, SD Card Error and No SD Card.

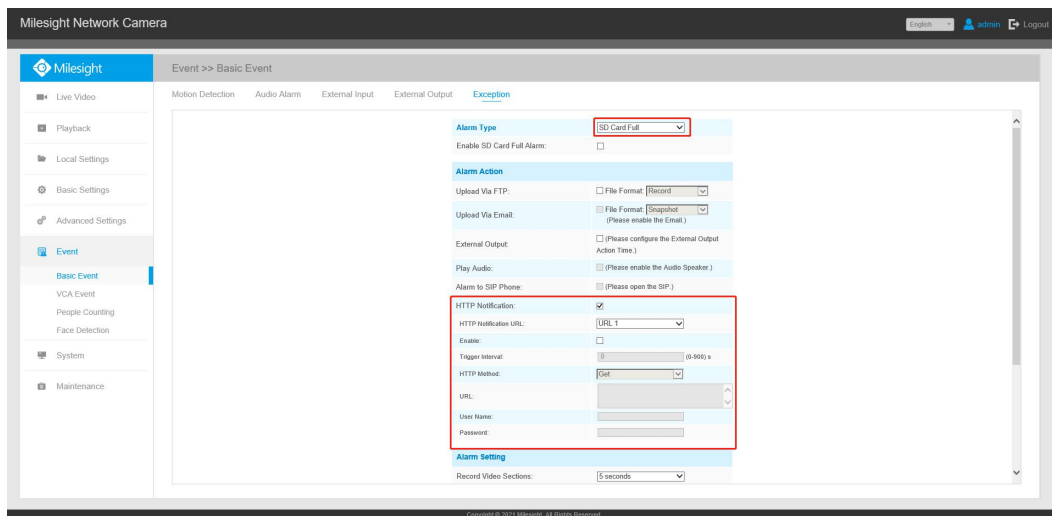


Figure 9 Exception page

- (2) Added 1X to Proportional Zoom Times in Motion Detection of PTZ Camera Series.

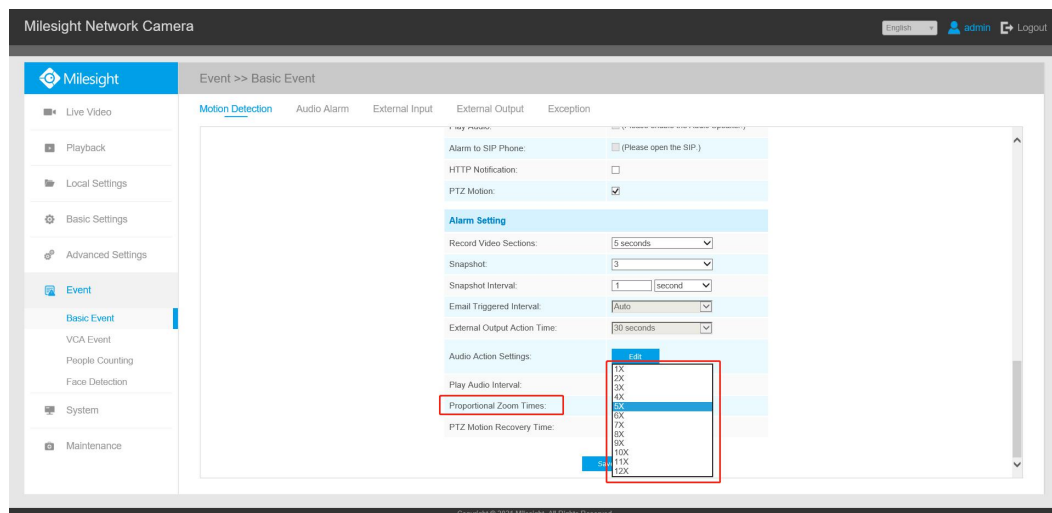


Figure 10 PTZ Motion Detection page

- (3) Optimized the External Output Action Time of People Counting.
- (4) Added PTZ Auto Tracking to Alarm Action of Advanced Motion Detection.

Note: Make sure your camera model is MS-CXXXX-XXC.

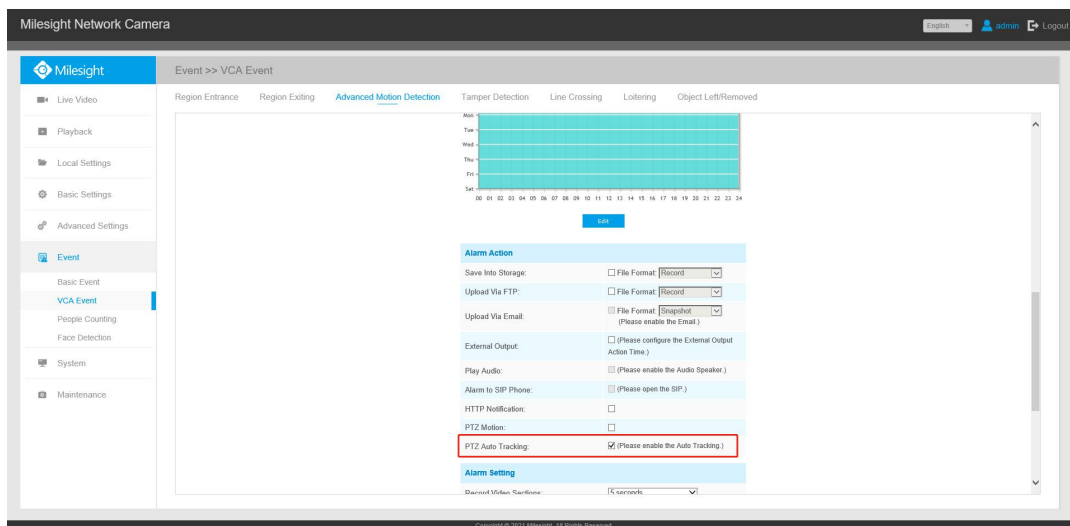


Figure 11 PTZ Motion Detection page

- (5) Optimized the two-way recognition of the Radar models, which supports Vehicle Speed Detection, Vehicle Direction Detection and Traffic Flow Detection are supported for passing vehicles.
 - (6) Optimized the accuracy of Attribute Recognition function for LPR Camera Series, including vehicle color recognition, vehicle type recognition and license plate color recognition.
- Note:** Make sure your camera model is MS-CXXXX-XXC.
- (7) Increased The Maximum Number of Concurrent Streaming in Access List to 10.

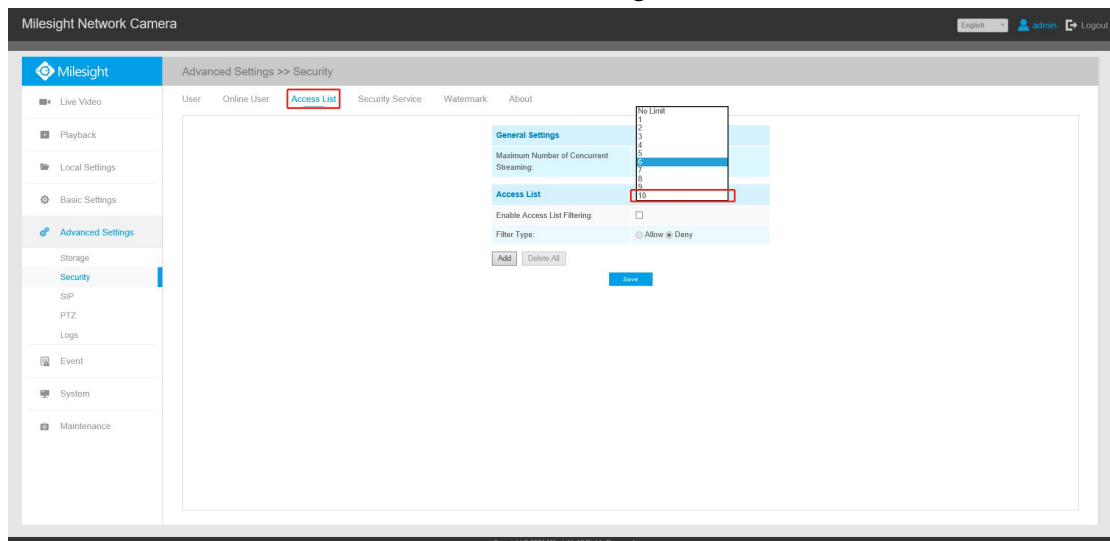


Figure 12 Security page

- (8) Added a unique Series Number for Cameras.

3.3 Bug Fixes

- (1) Fixed the problem that the delay of camera audio when IE browser is used.
- (2) Fixed the problem that the FTP custom screenshot file will have the same name when uploading to Filezilla Server in the same second.
- (3) Fixed the problem that the frame rate of manual recording under Chrome browser is different from the frame rate actually setting.
- (4) Fixed the problem that camera's PTZ speed did not match the PTZ speed controlled by ONVIF commands.
- (5) Fixed the problem that event cannot be accurately detected when the camera is installed upside-down.

4. Upgrade steps

Please check each model with the right firmware version as mentioned above, then upgrade as the following steps:

Step 1: Go to the web page of Network Camera, Configuration -> Maintenance -> System Maintenance;

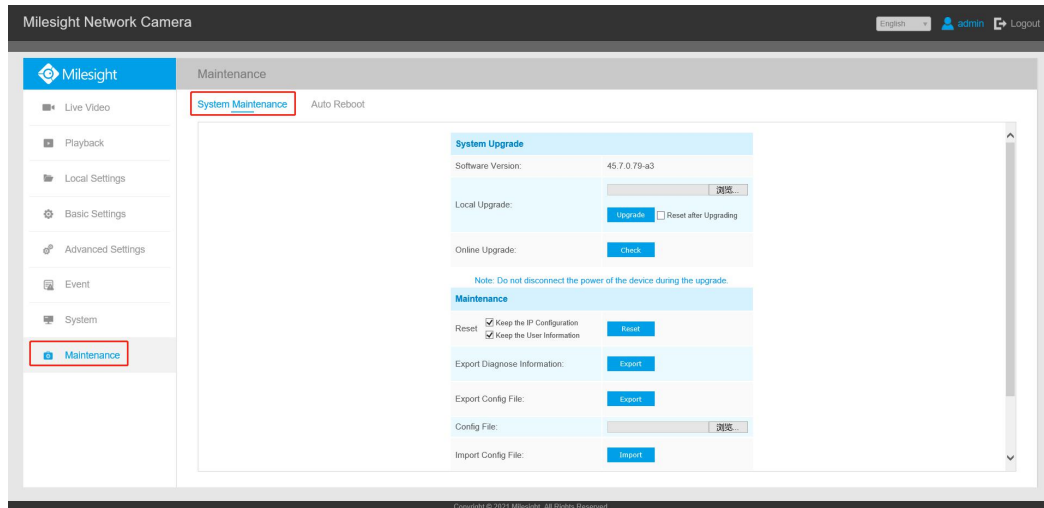


Figure 19 System Maintenance page

Step 2: Browse and select files for the upgrade;

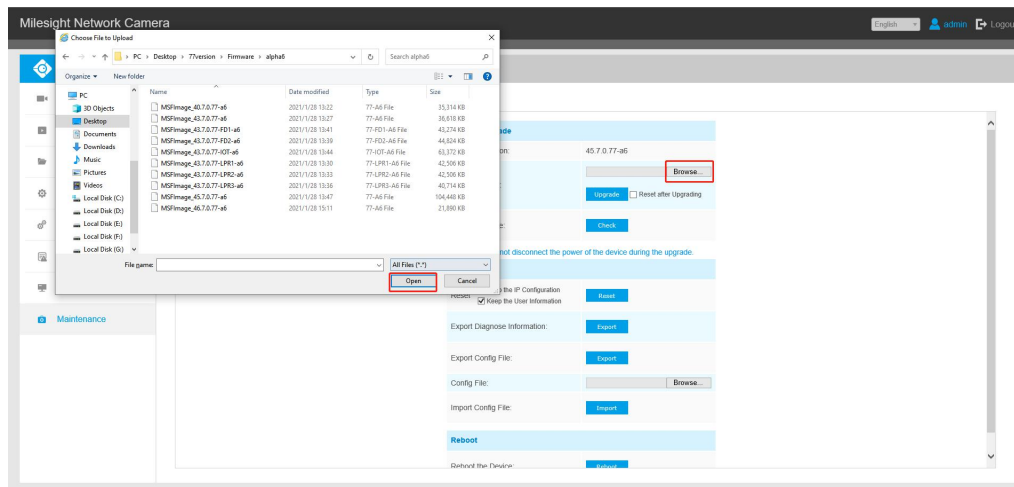


Figure 20 System Maintenance page

Step 3: Click the "Upgrade" button after it prompts "Uploading file successfully", then please wait about 1~3 minutes. The upgrade will be done after the system reboots successfully.

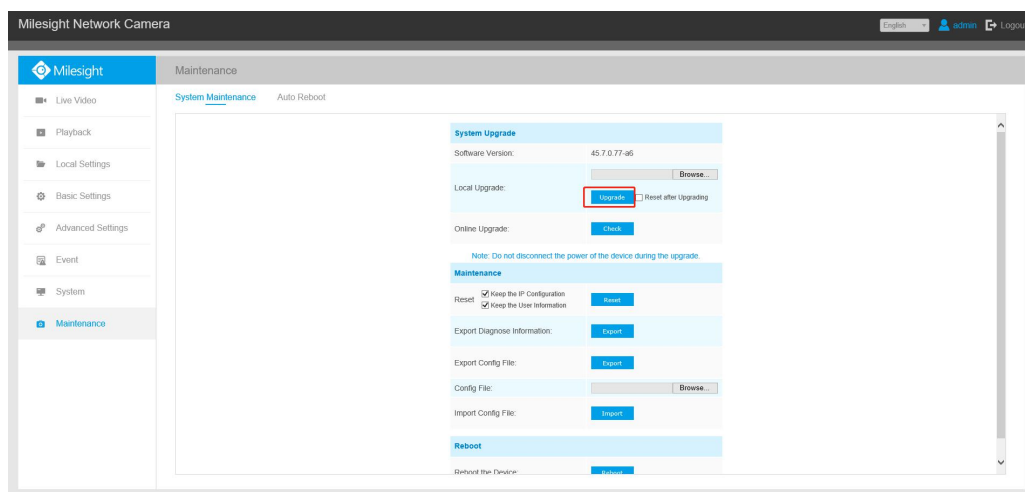


Figure 21 System Maintenance page

Notes:

- (1) For the new version, you need to re-install the ActiveX. Please close the browser during installation. Otherwise, the ActiveX may not be installed correctly;
- (2) Please clear the cookies and caches of the web browser after re-installing the ActiveX.